



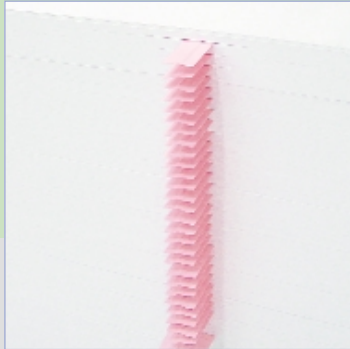
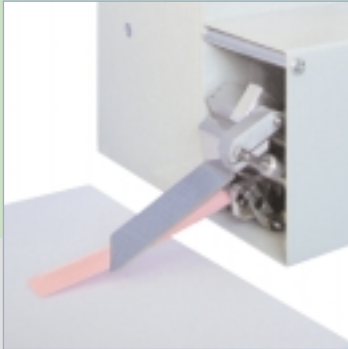
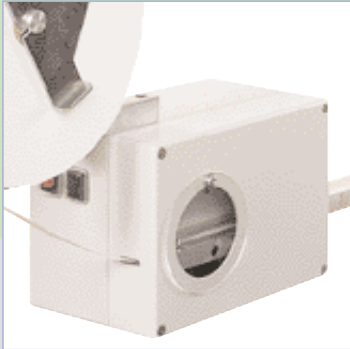
Tab Inserter

Product program

Mediprint

For more than 3 decades years, Mediprint has been successfully producing i.a. Tab-inserters, Powder-devices which essentially increase the efficiency of your production.

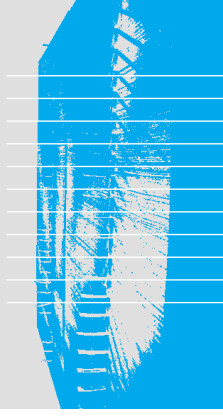
Development and production take place at the same site, situated 30 kilometres to the east of Munich, which means more flexibility proximity to production and clients short delivery terms excellent price-performance ratio.



MEDIPRINT

Tab Inserter STR-4.2

This version is designed to be used with machines at which the desired batch size cannot be entered. For entering the batch size, an input Keyboard with display is provided at the Tab Inserter.
The Pedestal-Version is alternate usable on all machines.



Functions

- Batch preselection up to 9999
- Tab length - variable
- Cutting delay - variable
- Tab advancement - variable
- Control sheet registration
- Waste marking (tape)
- Tape reel end - Acoustic signal
- Warning if the batch size is too small

Data Output

- Numbers of control sheets
- Numbers of waste sheets

Options

- Tab chute variable
- Tab chute with deflection
- Counting sensor (Laser)
- Mounting version
- Interface RS 232
- Optional: RS 422, RS 485
CAN Bus or others

Versions

Tab Inserter portable
Attachment Tab Inserter vertical slewable
Attachment Tab Inserter horizontal slewable

Technical Data

Mechanical

Weight: attachment version: 4 kg
portable version: 12 kg

Operating surface for the version: 300 mm x 300 mm
Tab insertion height: from 400 mm – 1700 mm stepless
Tab chute: 300 mm long
Options: up to 1000 mm every length

Electric

Microprocessor-Control
Power: 230 V - 50/60 Hz
Operating tension: 24 VDC +/- 10 % (Transformer)
Insertion impulses: 12 V – 48 VDC or
potential free contact
Power loss: 5 VA
Storing temperature: -20 °C bis 60 °C
Operating temperature: 0 °C bis 40 °C
Type of protection: IP54

Tab Inserter STR-4.2



Tab Inserter with Separating Tongue: STR-5, STR-5.3

Tab inserter for applications where the insertion impulse is provided from the main machine and when there is no space between the last and the next sheet. The necessary space is provided by the STR via a separating tongue. Tape insertion against paper run from the front into the pile.

In general the STR is fixed on the machine. The block size is entered at the main machine. Tape length, holding time of the tape and insertion speed are adjustable by DIP-switches. Since the tape reel is positioned outside the casing, it may be bigger than the one of the STR-4.2 (220 mm diameter).



Technical Data

Mechanical

Weight: attachment version: 6 kg
Tab chute (optional): max. 50 mm

Electric

Microprocessor-Control

Operating tension: 24 VDC +/- 10 %
Insertion impulses: 12 V – 48 VDC or
potential free contact

Power loss: 5 VA
Storing temperature: -20 °C bis 60 °C
Operating temperature: 0 °C bis 40 °C
Type of protection: IP54

Tab Inserter STR-5.3



Tab Inserter STR-6

Tab inserter for applications where the insertion impulse is provided from the main device. Tab insertion in the direction of the paper run, with space between the last and the next sheet.

The block size is entered at the main machine, the signal for the tap insertion for each batch is caused by the main machine. Tape length, holding time of the tap and insertion speed are adjustable DIP-switch. Since the tape roll is positioned outside the casing, it may be bigger than the one of the STR-4.2 (220 mm diameter).

Technical Data

Mechanical

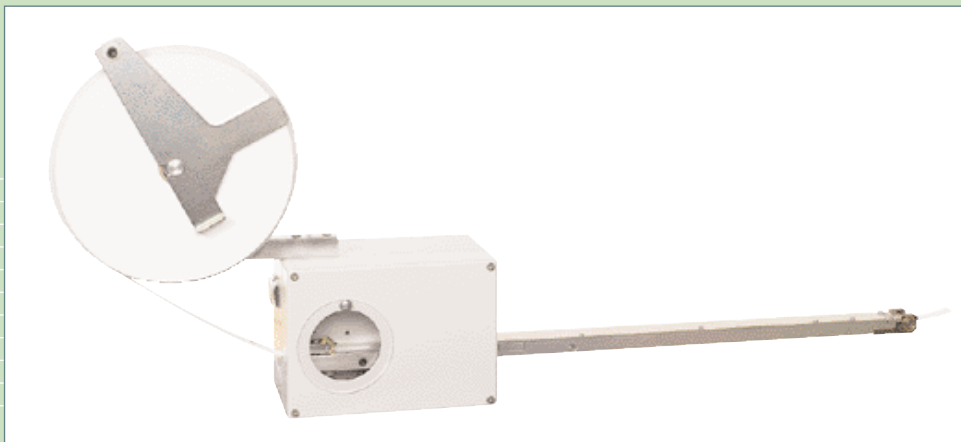
Weight: attachment version: 5 kg
Tab chute (optional): every length

Electric

Microprocessor-Control

Operating tension: 24 VDC +/- 10 %
Insertion impulses: 12 V – 48 VDC or
potential free contact

Power loss: 5 VA
Storing temperature: -20 °C bis 60 °C
Operating temperature: 0 °C bis 40 °C
Type of protection: IP54



Tab Inserter STR-6

MEDIPRINT Apparatebau GmbH

Glonnerstraße 31
D-85567 Grafing b. München
Telefon: + 49 (0) 80 92 / 46 69
Fax: + 49 (0) 80 92 / 3 14 30

www.mediprint.com
E-Mail: info@mediprint.com